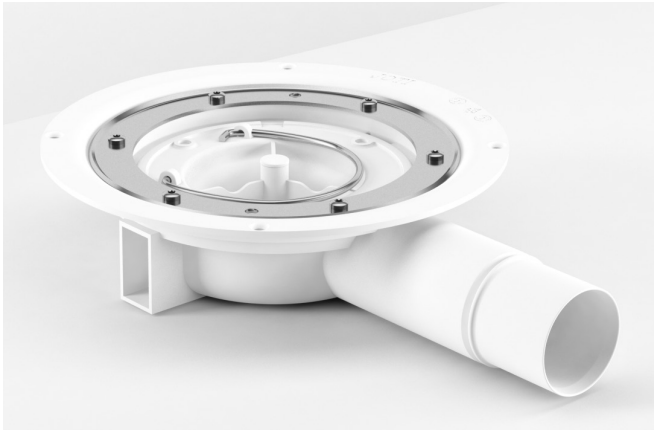


PURUS 59mm S-SERIES FLOOR GULLY

A brand new floor gully with an extra-low profile of 59mm

Suitable for installation into both tiled and vinyl floors



Purus' 59mm S-Series floor gully has an extra-low profile of just 59mm and includes a NOOD no-odour water trap to ensure any foul smells are not omitted through the drain.

It can be installed into either tiled or vinyl floors with its specially designed clamping ring.

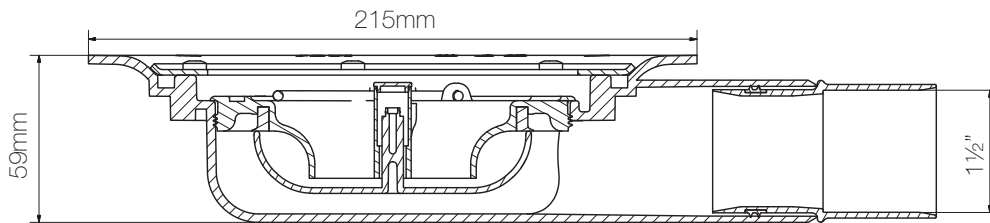
Product code: 7110406UK

Technical stats

Material: PP gully/ABS adapter
Outlet: 1½"
Height: 59mm
Flow rate: Min. 0.8l/s

Included

NOOD water trap
Clamping ring inc. 6 screw holes
Screws for clamping ring
50mm to 1½" adapter



Grate options - please order separately

Different stainless steel grate options are available depending on whether your 59mm floor gully will be installed into a tiled or vinyl floor.



S-Series Drop grate for vinyl
Prod. code: 7129507



PK200 Drop grate for tiles
Prod. code: 7138376
Other designs are available