

MINI SERIES FLOOR DRAINS

Cleaning and maintenance instructions for tile installations

When the grating needs to be cleaned of dirt and/or hair, please also clean the water trap inside by following this guide.

1



Remove the square stainless steel grating from the top of the drain. You can use a screwdriver or something similar to ease it out.

2



Locate the plastic circular handle from inside the floor drain and lift it upwards.

3



Pull the handle firmly upwards so the full NOOD water trap comes out of the drain.

4



Once removed, rinse the NOOD water trap under running water.

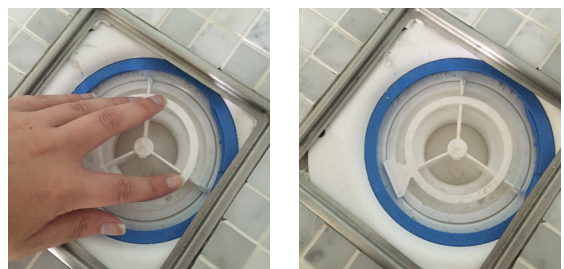
5



Pull down the bottom section of the NOOD water trap to release the spring-loaded mechanism. Hold the NOOD water trap open in this way while cleaning. You can use an old toothbrush or your finger to clean any dirt from the trap.

Only use water for this - never use any bleach or bleach-based products (including hair dye). If you wish to use bleach down the drain, remove the NOOD water trap first so it goes directly into the drain and the pipework.

6



Once clean, place the NOOD water trap back into the floor drain and push it into position. Ensure the handle is clicked back into place.

7



Place the square stainless steel grating back in place on top of the floor drain.

Purus Ltd.
Suite 6, Arena Park
Tam Lane, Scarcroft
Leeds
LS17 9BF

PURUS

Please contact us for further information:

Tel: 0113 289 3172
Technical Helpline: 0113 289 6102
Fax: 0113 289 3778
info@purusgroup.com
www.purusgroup.com