

PURUS GRATES FOR MINI SERIES GULLIES

Square and round grates in stainless steel

All grates are suitable for installation with Purus' Minimax 50, Minimax Two Part, Mini Brage 50 and Mini Brage 110 floor gullies

PK155 & PK200 grates

Patterned stainless steel grates for tiled floors

Floating style - these can be adjusted in height to be flush with your tiles



Classic

155x155mm: 7138359
200x200mm: 7138377



Art Deco

155x155mm: 7138358
200x200mm: 7138374



Drop

155x155mm: 7138360
200x200mm: 7138376



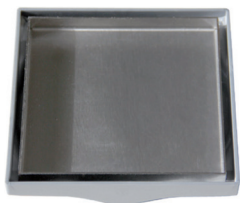
Wave

155x155mm: 7138361
200x200mm: 7138375

Tile adapter grates

130x130mm stainless steel grates with a plastic adapter piece for tiled floors

The adapter piece slots into the gully and the square part is rotated to match your tile position



Tile Insert

Product code: 52728



Twist

Product code: 52729



Platinum

Product code: 52730

Round grates for vinyl

130mm diameter stainless steel grates for vinyl floors



Drop

Product code: 7138392



Wave (lockable)

Product code: 7138394



Art Deco

Product code: 7138400

Locks for Wave grate

Product code: 7138426UK