

Saga

Floor gully with built-in extension and tilting possibility



Purus Saga is a new floor gully suitable for renovation/new production. It is adapted for embedding in concrete or similar material. Saga has a built-in extension which is step less adjustable 15 mm and has a tilting angle of 4°.

Purus Saga is available in 4 different models:

75 mm side-, 75 mm bottom-, 110 mm bottom and 75 mm side with 45° tilting, which facilitates i.e. installation in a base plate on the ground.

Tested and approved acc. to SS-EN 1253.



Saga

Floor gully with side- and bottom outlet, of polypropylene (PP), possible to adjust and tilt after embedding.
Removable water trap.

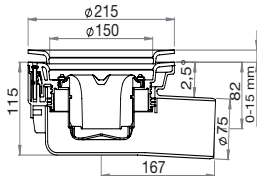
- Outlet Ø75/110 mm
- Design grating Drop Ø150 mm
- Water trap TYR
- Clamping ring Ø150 mm, blue

Capacity: 0,8 lit/sec.

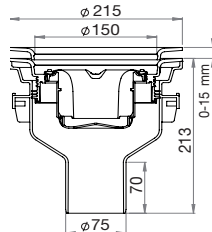


Product description	Dimension	Art.no.
Saga 75 side	Ø75 mm	711 36 09
Saga 75, 45°	Ø75 mm	711 36 12
Saga 75 bottom	Ø75 mm	711 36 10
Saga 110 bottom	Ø110 mm	711 36 11
Articles included		Art.no.
Tyr, water trap of plastic		711 80 69
Clamping ring, automatic adjusting, KL 150		714 13 15
Grating drop of plastic, 150		713 84 46

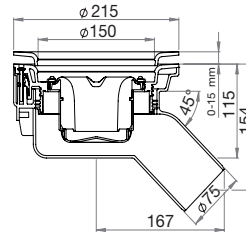
Saga 75 side



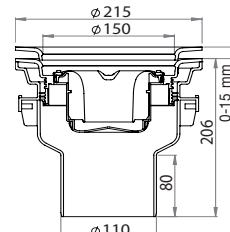
Saga 75 bottom



Saga 75, 45°



Saga 110



N.B. When connecting the sealing membrane to the gully, follow the instructions from the supplier of the sealing membrane.

When installing in tile flooring, change the circular grating into a Purus Tile frame. Several models are available.

Other types of flooring:

Concrete flooring: use grating Art no 713 83 41

Resin flooring: use PM ring

***) N.B.** The Purus plate Multi does not fit well with the Purus Freja gully when installing tiles, because the outlet pipe could come up too high for the socket connection.



Purus floor gullies are approved acc. to the European standard floor gullies, EN 1253.
Approved to be installed in all types of wet areas.



Purus is certified acc. to ISO 9001

Our ongoing product development may entail changes in version, design and construction, and we reserve the right to make such changes.

Maintenance

Use only light detergent and a soft brush when cleaning, otherwise the surface might be tarnished. This holds for both the white and metallized products.

Purus AB
nfo@purus.se
www.purus.se

PURUS