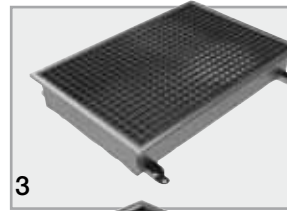


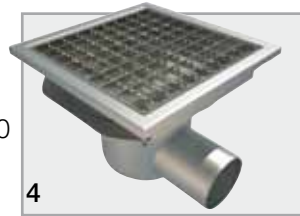
Care and Maintenance

Stainless steel channels & gullies



Models

1. Purus channel 110
2. Purus channel 200/300
3. Kitchen channel
4. Square-top gully
5. Industrial & Laundry gully



Care

PURUS floor gullies have an easy removable/divisible water trap. To keep a good hygienic standard the gully should be cleaned 2-3 times per year.

Desmantling

- Lift off the stainless grid/grating
- Clean the sediment trap/gravel guard if needed
- Lift up the water trap and clean it
- (Some insets can be divided for easy cleaning)

Reassembling

- Put back the water trap. Grease the gaskets.
- Make sure the water trap is down in its bottom position.
- Pour on water in the water trap.
- Mount sediment trap/gravel guard (if any) and gratings.
- Put back the stainless grid/grating

Care- and maintenance instructions for Stainless steel channels & gullies

Normal care

Sprinkle dry powder detergent, i.e. dishwasher powder or mild scouring powder on the surface. Scrub the powder towards the metal with a moistened polish cloth or sponge. Rinse the detergent carefully with cold water, dry/polish the metal surface with a dry polish cloth. In case of discolouring after the drying up, this indicates that the surface has not been properly cleaned, and the procedure must be repeated.

In case of heavy dirt, the surface might need several treatments.

Note. Do not rinse the surface with warm water, because discolouring can easily appear due to evaporating. **Do not let the stainless surface dry by itself.**

Removal of lime deposits

Lime desposits which have accured from evaporating of the water kcan be removed with one of the following solutions:

- Vinegar
- 10 % vinegar essence
- Diluted nitric acid (to one part HNO₃ add 4 part water)

Note. VWhen treating with nitreic acid, good ventilation is required. Morover the same precautions should be taken as when dealing with strong acid. After treatment with some of the above methods, the surface must be carefully rinsed with cold water whereafter drying with a soft polishing cloth should be done. Use protective gloves.

Removal of rust spots

Rust spots that have not been left on the surface during a longer period, can normally be removed by the use of a mild scouring powder. The dry scouring powder is lightly rubbed away with a moistened polishing cloth, then rinsed with cold water and dried with a soft cloth.

In case of durable rust spots not being removed during a long time, normally a burnt in corrosion will appear in the stainless steel surface, which results in a sustainable discolouring, despite the removal of the rust in line with the above mentioned care regulations.

In those cases we recommend alternative brushing with dry nylonfibre brushes or removal with diluted 1 part nitric acid NO₃, diluted with 4 part water. Rinsing and drying as stated above.



Purus floor gullies are type approved according to the European Standards for floor gullies, SS EN-1253.



Purus has the ISO 9001 certificate.

Our ongoing product development may entail changes in version, design and construction, and we reserve the right to make such changes.



PURUS AB
info@purus.se
www.purus.se/gl

PURUS